

General Notes for ARNE NLS Advisor Device Setup

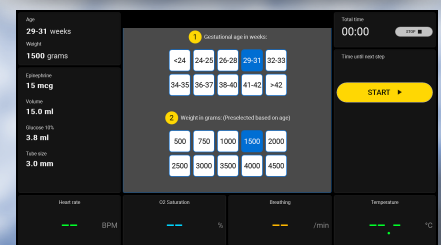
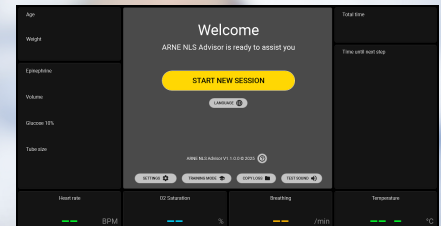
- Mounting & Accessibility**
 - Securely mount the **ARNE NLS Advisor device** at the **resuscitation table**.
 - Ensure it is **clearly visible at eye level** and **within arm's reach** of the user.
- Power & Audio**
 - Keep the **ARNE NLS Advisor device** **continuously connected** to a **power outlet**.
 - Ensure the **external Bluetooth loudspeaker** is **charged** and **functioning**.
- Patient Monitoring System Connection**
 - Connect the **ARNE NLS Advisor device** to the **Patient Monitoring system** to allow **mirroring of vital signs** on the device.
 - Verify the **communication protocol settings** in the **'SETTINGS'** menu to match the **correct patient monitoring system**.
- Vital Sign Sensor Setup for Newborns (when the monitoring system is connected):**
 - Oxygen Saturation (SpO₂)**
 - Attach a **correct-size SpO₂ sensor** to the **right hand** (preferred) or **right foot**.
 - Heart Rate & Breathing Rate.**
 - Apply **three-lead ECG sensors** to the **chest** of the newborn.
 - Temperature, attach a temperature probe to the skin of the abdomen.

Preparation of ARNE NLS Advisor Device for Resuscitation

- Power Connection**
 - Ensure the **ARNE NLS Advisor device** is **connected** to a **power outlet**.
- Device Startup**
 - Switch on** the device by **pressing and holding** the **'On/Off' button** for **2 seconds**.
- Bluetooth Loudspeaker**

Start of the Newborn Life Support session, at birth of the baby.

- Push 'START NEW SESSION' button in home screen.**
 - Fill out question 1 & 2, gestational age and accept or adjust preselected weight.
- Push the 'START' button**
 - Use the audio & visual cues as guidance to perform NLS procedure.



Current step of the NLS protocol

Age & Weight of newborn baby.

Automatically calculating correct dosage.

Age
24-25 weeks

Weight
750 grams

Condition

Epinephrine
10 mcg

Volume
7.5 ml

Glucose 10%
1.9 ml

Tube size
2.5 mm

Heart rate above 100 bpm?

Check heart rate by auscultation or attach monitor.

Total time
00:46

Time until next step
00:02

YES
→ Good colour and tone?

NO
→ Ventilate the baby.

Heart rate
-- BPM

O2 Saturation
54 %

Breathing
40 /min

Temperature
35.0 °C

Total Timing & Interval timing of NLS Protocol

Buttons for proceeding to next steps of the NLS Protocol

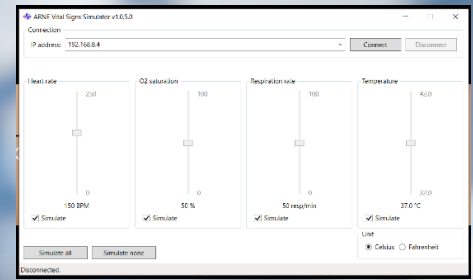
Newborn vital sign readings of patient monitoring system

Less Mistakes
Better Survival

Quick Reference Guide - ARNE NLS ADVISOR for NLS Training & Simulation use

General Setup Notes for ARNE NLS Advisor System

- Mounting the ARNE NLS Advisor Device**
 - Securely mount the device at the resuscitation table.
 - Ensure it is clearly visible at eye level and within arm's reach
- Power and Audio**
 - Keep the ARNE NLS Advisor device continuously connected to a power outlet.
 - Ensure the external Bluetooth loudspeaker is charged and ready for use.
- Network Connection**
 - Use a LAN cross cable to connect the trainer computer to the ARNE NLS Advisor device.
- Software Installation**
 - Install the ARNE Vital Signs Simulator application on the trainer computer.
- Initial Configuration**
 - Perform a one-time setup of the communication port on the trainer computer.
 - This enables the simulated vital signs to be displayed on the ARNE NLS Advisor device.

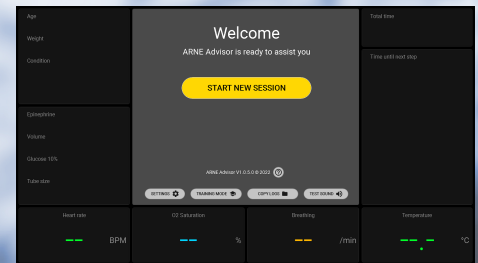


Preparation of ARNE NLS Advisor Device for Training & Simulation Session

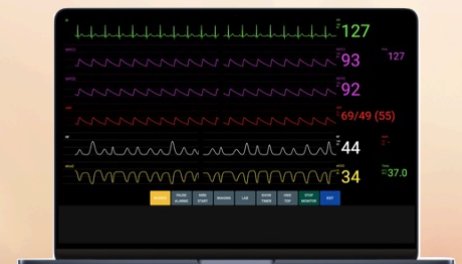
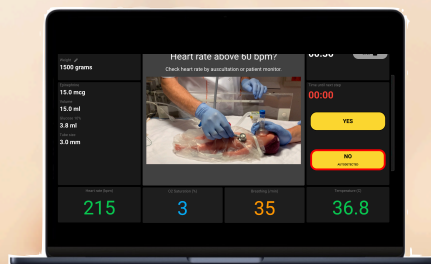
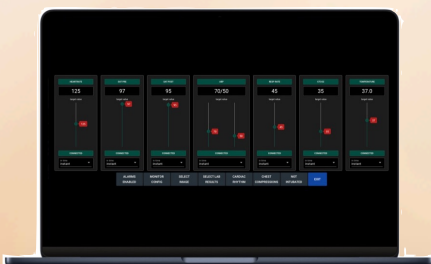
- Power Supply**
 - Confirm the device is connected to a power outlet.
- Power On the Device**
 - Press and hold the 'on/off' button for 2 seconds to turn on the ARNE NLS Advisor device.
- Activate Bluetooth Loudspeaker**
 - Switch on the external Bluetooth loudspeaker.
- Audio Test**
 - On the 'Welcome' screen, press 'TEST SOUND'.
 - Adjust volume if necessary to ensure clarity.
- Activate Training Mode**
 - Switch to 'TRAINING MODE', using pin-code 13860
 - This enables the device to accept simulated vital signs from the trainer computer6
- Simulate vital signs**
 - Use the ARNE vital signs simulator application on the trainer computer to:
 - Change and adjust vitals sign readings
 - Align parameters with the NLS training scenarios.

Start of the Newborn Life Support session, at birth of the baby.

- Push 'START NEW SESSION' button in home screen.
 - Fill out question 1 & 2, gestational age and accept or adjust preselected weight.
- Push the 'START' button
 - Use the audio & visual cues as guidance to perform NLS procedure.



Web-Based ARNE NLS Advisor & Vital Signs Simulator Application



Less Mistakes
Better Survival